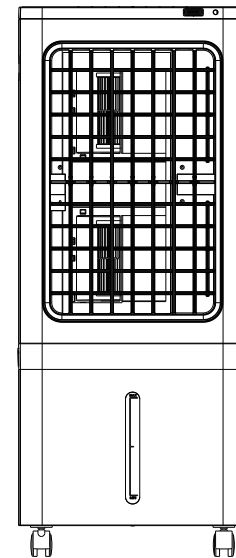


# EVAPORATIVE AIR COOLER INSTRUCTION MANUAL



**MODEL:LL-Q8D SERIES**

- LL-Q8D1  LL-Q8D2  LL-Q8D3  LL-Q8D4  LL-Q8D5  
 LL-Q8D6  LL-Q8D7  LL-Q8D8  LL-Q8D9



Colding



No polluting



Dustproof

Please carefully read this manual before attempting to use this evaporative air cooler and save it for future reference.

版本号	01	日期	20210327	图纸编号	
设计		修改人及日期			
审核		物料编码	114000242	图纸名称	说明书 通用//Q8D遥控 //英文
备注					
共 页第 页			广东顺德锐铂汇电子科技有限公司		

## Warning

This appliance is not intended for use by persons (including children) with reduced physical, sensory or mental capabilities, or lack of experience and knowledge. Unless they have been given supervision or instruction concerning use of the appliance by a person responsible for their safety. Children should be supervised to ensure that they don't play with the appliance. The company is not responsible for any consequences if any of the above actions are in violation.

If there is a failure, please contact the guide on guarantee card, such as the maintenance station can not solve the problem can be directly contacted to our company.

Thank you for purchasing our air cooler. This manual is the universal version for various models of our household air coolers, so may the one you purchased is not in accordance with the one this manual introduces, but this doesn't affect your operation or use. Please read all the instructions in detail before first time use to ensure proper use of the machine. Besides please keep the manual for future reference.

## TABLE OF CONTENTS

Product Features.....	1
Construction Drawing .....	2
Spare Part List .....	3
Technical Parameters.....	3
Operation Instruction .....	3
Control Panel and Operation.....	3
Important Safeguards.....	4
Maintenance and Cleaning .....	5
Circuit Diagram .....	6
Trouble Shooting.....	6

## PRODUCT FEATURES

### ● Natural Cool

It cycles the water to blow cool air. It can lower the surrounding temperature and provide you a comfortable environment in hot summer.

### ● Air Clean

Unique water honeycomb washing function effectively removes the gases like formaldehyde, ammonia which comes from the paint, adhesives, and plywood of the new decorated houses. It also can filter the cigarette nicotine and freshen the air to care for your health.

### ● Ionizer

It releases negative ions to activate variety of enzymes to promote the human's metabolism and improve sleep quality. It also can be used for sterilization to freshen the air and care health.

### ● Optional detachable or built - in water tank.

Detachable water tank design, can be washed with clean water, and drain water. The detachable water tank can be flushed and cleaned by water hose from the water inlet, and the waterproof rubber plug can be pulled out to drain the water. All watertight, safe and convenient, to prevent the breeding of bacteria.

### ● Natural cooling, energy saving, high-efficiency, friendly environment

Using the world's advanced physical cooling technology, water storage cooling capacity, long

release time, can be used repeatedly for a long time. The total input power of the whole machine is 1/20 of the electricity consumption of the general air conditioner. This product belongs to environmental protection household appliance, without fluorine pollution, belongs to open door and window type cooling household appliance, can be used as air-conditioner companion product, the effect is better.

### ● 120°Wide range of air output&LED digital display.

#### Shutdown air outlet automatic shutdown function.

The outlet will close when the power supply is off. 3 fan speeds: HIGH-MID-LOW, and separate sleep mode. High speed wind is strong. Sleep mode wind is soft, quiet

### ● Remote control

6.5 meters remote control, 120°angle wide range receiver.

### ● Water Shortage Detection

When work with cool function, if water is not enough, "Bi-Bi" alarm sounds, the corresponding light flickers and then the water pump will stop working after 30 seconds if no water added in.

### ● Memory function

It can memorize the current working status and the memory is not cleaned until the power supply is off.

### ● Temperature and Humidity (Optional) detection and display

It can show the temp and humidity(Optional function) at any time.

### ● 1 to 24 hours timer setting

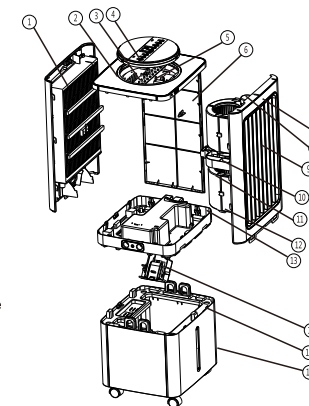
1-24 hours timed shutdown, automatic shutdown without any key operation, more secure, preventing forgetting to shut down and wasting electricity after going out.

### ● Water Shortage Detection

When work with cool function, if water is not enough, "Bi-Bi" alarm sounds, the corresponding light flickers and then the water pump will stop working after 30 seconds if no water added in.

## CONSTRUCTION DRAWING

- |                                    |                            |
|------------------------------------|----------------------------|
| ① Back cover                       | ⑨ Vertical leaf            |
| ② Top cover                        | ⑩ Motor support            |
| ③ Monitor                          | ⑪ FanTop cover             |
| ④ Control box                      | ⑫ Fan bottom cover         |
| ⑤ Main PCB                         | ⑬ Middle tray              |
| ⑥ Single side air inlet side plate | ⑭ Water pump rod           |
| ⑦ Front cover                      | ⑮ Water tank support frame |
| ⑧ Synchronous motor                | ⑯ Water tank               |



## SPARE PARTS

No.	Accessory Name	Quantity	Unit
1	Air cooler	1	set
2	Instruction manual	1	Pc
3	Power cord	1	Pc
4	Casters	4	Set
5	Remote controller	1	Pc

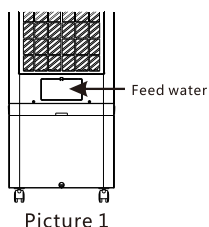
## TECHNICAL PARAMETERS

Model No.	LL-Q8D1/LL-Q8D2 LL-Q8D3/LL-Q8D4	LL-Q8D5/LL-Q8D6 LL-Q8D7/LL-Q8D8	LL-Q8D9
Voltage	220V	220V	220V
Frequency	50Hz	50Hz	50Hz
Power	100W	100W	100W
Max Air Flow	2200m3/h	2200m3/h	2200m3/h
Max Capacity	30L	30L	30L
Net weight	11.45KGS	11.45KGS	11.45KGS
Gross weight	13.50KGS	13.50KGS	13.50KGS
Production size	400x350x920mm	400x350x920mm	400x350x965mm
Packing size	440x385x945mm	440x385x945mm	440x385x990mm

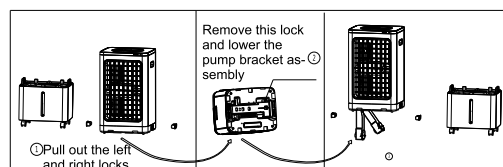
**Remark: Due to constant development of our production in regards to specification and design, we take reservation for changes without prior notice.**

## OPERATION INSTRUCTION

1. Open the package and take out the product. Place the product on the horizontal floor.
2. Check if the spare parts are complete, same as the component list.
3. Place the unit on the floor. Take out the wheels to assemble. Note: Two casters with brakes are mounted on the front wheel and the other two are mounted on the rear wheel
4. water at the outlet according to the prompt sign. Feed the cooling water tank as shown in picture 1.
5. Only use the unit with correct power required. Get the plug pin into power and a small "beep" sound can be heard and the unit is in standby state
6. Separate water tank installation. See the model selection (refer to picture 2)



Picture 1



Picture 2

## CONTROL PANEL AND OPERATION

1. **ON/OFF:** Press this button in standby mode to display the ambient temperature on the digital display. If the cooling function is turned on, press the "on/off" button, and the fan will continue to run for 15 minutes to dry the wet honeycomb and turn off, or press the "on/off" button again to close it.
2. **SPEED:** Press this button to select desired fan speed, LOW-MID-HIGH-LOW, in turn. The corresponding speed indicator light will be displayed.
3. **SLEEP MODE:** sleep mode button is a valid button when power is on, press this button, the corresponding indicator light is on and press this button again, then revert to work under the memorized speed.



It's subject to actual optional function



The control function of the remote control is consistent with that of the buttons of corresponding models

4. **SWING:** When the fan is running, press the corresponding key to control the start and close of the vertical/horizontal blade swinging (first on, second off), the pendulum indicator light is on, the pendulum load is output, the upper, the lower, the left and the right automatically swing the wind.
5. **cooling:** when the fan is running, press this button to control the cooling function on and off (the first time on, the second time off), the cooling indicator light is on.
6. **Humidification:** when the fan is running, press this button to control the humidification function on and off (the first time on, the second time off). When the humidification function is turned on, humidification indicator light on, water pump and atomizer will on, and spray mist (optional function).
7. **IONIZER:** Press this button to release negative ions into the air(first on, second off) and ionizer indicator lights.
8. **TEMPERATURE DETECTION:** The temperature automatically displays when the machine starts.
9. **Humidity detection:** effective when the air cooler is on, long press the ionizer button for 3 seconds, ambient humidity display on the digital display screen. 3 seconds after the cycle display time remaining or temperature detection, and then press 3 seconds to cancel the humidity detection function.
10. **TIMER:** 1 to 24 hours of regular shutdown, no button or remote operation of the machine for 24 hours automatic shutdown.

## IMPORTANT SAFEGUARDS

1. Do NOT open and repair the unit by any unqualified person.
2. Wet hands are not allowed to operate the machine, and cleaning and wiping of the connected-power machine is not allowed, to avoid damage caused by electric shock. If you do not use the unit for a long time, please unplug the power plug, drain the water tank, and put it in a dry and cool place.
3. Do not insert any other objects into the grid of air vent (inlet or outlet) during operation. The machine is equipped with a high-speed rotating fan to prevent accidental injury or damage to the machine.
4. Do not cover the appliance with paper, cardboard, plastic, metal foil, or any other flammable material. Otherwise, a fire may occur. Keep the appliance away from any hot sources.
5. Do not use outdoors, indoors only. Avoid direct sunlight for a long time
6. Water level must be between the MIN and MAX line.
7. After filling with water, do not lean the unit and avoid moving it, which may cause water to overflow the sides of the tank and leak. If the unit needs to be moved a little, push on the side gently.
8. Never put the unit side down especially with water inside, if it accidentally falls down, unplug the power immediately and don't restart until it's dry at least for 24 hours.
9. Do not place any objects on the top of the unit. Don't cover the unit window while using.

10. Keep the air vent (inlet or outlet) away from obstacles such as curtains, walls and so on.
11. Since this product can clean the air, the water in the water tank is easy to deteriorate and produce peculiar smell, please pay attention to change the water; Use this machine to humidify in winter, if the indoor temperature is below zero, it is better to use warm water to humidify.
12. Do not insert any other objects into the grid of air vent (inlet or outlet) during operation.
13. Don't use the unit in the damp environment like bathroom, swimming pool.
14. This appliance can be used by children aged from 8 years and above and persons without reduced physical, sensory or mental capabilities or lack of experience and knowledge if they have been given supervision or instruction concerning use of the appliance in a safe way and understand the hazards involved. Children shall not play with the appliance.
15. Cleaning and user maintenance shall not be made by children unless they are older than 8 and supervised.
16. Keep the appliance and its cord out of reach of children less than 8 years
17. If the supply cord is damaged, it must be replaced by its service agent or a similarly qualified person in order to avoid a hazard.
18. This appliance is intended to be used in household and similar applications such as:
  - staff kitchen areas in shops, offices and other working environments;
  - farm houses;
  - by clients in hotels, motels and other residential type environments;
  - bed and breakfast type environments.
19. Insert the power cord end into air cooler socket, make sure connect well. Must unplug the power cord pin from wall socket before moving the air cooler or adding water. Do not unplug the power cord end directly when the air cooler is working or moving the unit.

## Maintenance and Cleaning

**Note: After long time operation, the filtration mesh becomes clogged with dust and dirt, which will greatly affect the unit's performance. It is recommended to clean the filtration mesh every two week.**

### Cleaning the filtration mesh

1. Pull the plug
2. Loose screw, catch the filtration mesh handle and pull upwards.
3. Clean filtration mesh with mild detergent and soft brush.
4. Make sure filtration mesh is completely dry before installing.

### Cleaning the water tank

1. Remove the plug power.
2. Open the hooks on both sides of the tank, pull out of the water tank
2. Add water into the water tank and clean.
4. Pour out the water and make the water tank keep dry. In order to keep greatly effect of cooling, it is recommend to clean the water tank every three months.

Note: To ensure continued protection against risk of electric shock, the filter cannot be removed and cleaned.

### Cleaning the body

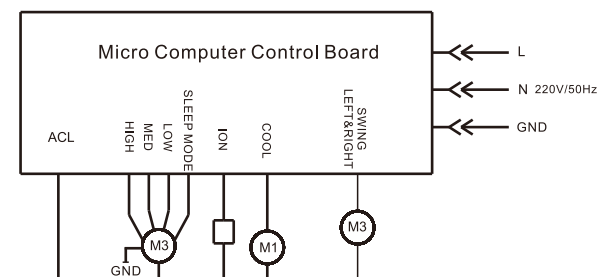
Clean the body with a little mild detergent on a soft cloth

#### Note:

**Unplug from outlet before cleaning.**

**No water on the control panel and the top of the product.**

## CIRCUIT DIAGRAM



## TROUBLE SHOOTING

**Please contact our service center or qualified technician for further inspection if have follow problems:**

Problems	Possible reasons	Solutions
Not working	<ol style="list-style-type: none"> <li>1. The plug is not securely inserted into the socket or not connected well.</li> <li>2. The "ON/OFF" button is not pressed.</li> </ol>	<ol style="list-style-type: none"> <li>1. Insert the plug pin into the wall socket and make sure it is connected well</li> <li>2. Press "ON/OFF" button after plugged.</li> </ol>
Cool effect not good	<ol style="list-style-type: none"> <li>1. Not enough water in water tank</li> <li>2. Water pump is blocked</li> <li>3. Air vent is blocked by dust</li> </ol>	<ol style="list-style-type: none"> <li>1. Add water to ensure enough water for pumping</li> <li>2. Clean water tank and remove the impurities.</li> <li>3. Clean the dust or foreign objects from the air vent</li> </ol>
Error Code:E1	Problem in temperature sensor circuit	Please replace the probe

Notice:

1. The problem cannot be found in the list or it continues.
2. Foreign substances or water enter into air cooler, causing the air cooler cannot be run.



This marking indicates that this product should not be disposed with other household wastes throughout the EU. To prevent possible harm to the environment or human health from uncontrolled waste disposal, recycle it responsibly to promote the sustainable reuse of material resources. To return your used device, please use the return and collection systems or contact the retailer where the product was purchased. They can take this product for environmental safe recycling.