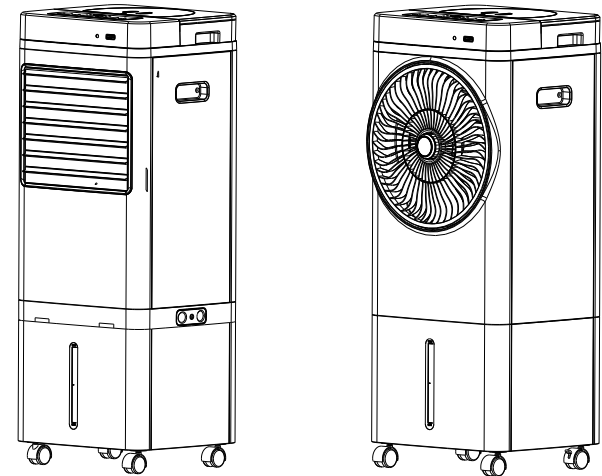


# EVAPORATIVE AIR COOLER INSTRUCTION MANUAL



**MODEL:LL-20A SERIES LL-20B SERIES**

LL-20A1  LL-20A2  LL-20A3  LL-20A4

LL-20B1  LL-20B2  LL-20B3  LL-20B4



Cooling



No polluting



Dustproof

Please carefully read this manual before attempting to use this evaporative air cooler and save it for future reference.

版本号	01	日期	20210420	图纸编号	
设计		修改人及日期			
审核		物料编码	114000248	图纸名称	说明书 通用/ LL-20A/20B/英文
备注					
共 页第 页			广东顺德锐铂汇电子科技有限公司		

### Warning

This appliance is not intended for use by persons (including children) with reduced physical, sensory, or mental capabilities, or lack of experience and knowledge, unless they have been given supervision or instruction concerning use of the appliance by a person responsible for their safety. Children should be supervised to ensure that they don't play with the appliance.

If there is a problem with this product, please contact the service point provided by the seller. If the problem cannot be solved by the service point, please contact our company directly.

Thank you for purchasing our air cooler. This manual is the universal version for various models of our household air coolers, so may the one you purchased is not in accordance with the one this manual introduces, but this doesn't affect your operation or use. Please read all the instructions in detail before first time use to ensure proper use of the machine. Besides please keep the manual for future reference.

## TABLE OF CONTENTS

Product Features...	1
Construction Drawing...	2
Spare parts list ...	2
Technical Parameters ...	3
Operation Instruction...	3
control panel and operation ...	4
important safeguards ...	5
trouble shooting...	5
Circuit Diagram ...	6

## PRODUCT FEATURES

### ● Natural Cool

It cycles the water to blow cool air. It can lower the surrounding temperature and provide you a comfortable environment in hot summer.

### ● Humidify (optional)

When the air is dry, the moisture of human skin evaporates quickly, and the skin of the lips is easy to become rough and cracked. Air cooler humidifies the air to avoid skin dry and quickly increases the relative humidity especially for the dry weather.

### ● Air Clean

Unique water honeycomb washing function effectively removes the gases like formaldehyde, ammonia which comes from the paint, adhesives, and plywood of the new decorated houses. It also can filter the cigarette nicotine and freshen the air to care for your health.

### ● Ionizer

It releases negative ions to activate variety of enzymes to promote the human's metabolism and improve sleep quality. It also can be used for sterilization to freshen the air and care health.

### ● Optional detachable or built - in water tank.

Detachable water tank design, can be washed with clean water, and drain water. The detachable water tank can be flushed and cleaned by water hose from the water inlet, and the waterproof rubber plug can be pulled out to drain the water. All watertight, safe and convenient, to prevent the breeding of bacteria.

### ● Natural cooling, energy saving, high-efficiency, friendly environment

Using the world's advanced physical cooling technology, water storage cooling capacity, long release time, can be used repeatedly for a long time. The total input power of the whole machine is 1/20 of the electricity consumption of the general air conditioner. This product belongs to environmental protection household appliance, without fluorine pollution, belongs to open door and window type cooling household appliance, can be used as air-conditioner companion product, the effect is better.

### ● 120°Wide range of air output&LED digital display.

#### Shutdown air outlet automatic shutdown function.

The outlet will close when the power supply is off. 3 fan speeds: HIGH-MID-LOW, and separate sleep mode. High speed wind is strong. Sleep mode wind is soft, quiet

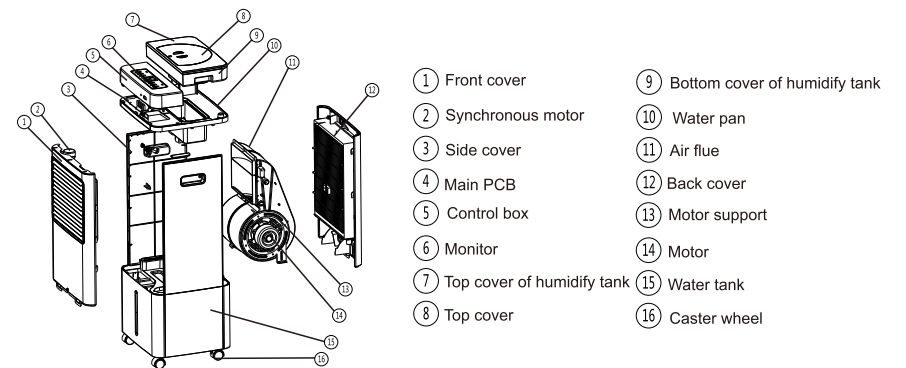
### ● Remote control

6.5 meters remote control, 120°angle wide range receiver.

### ● Water Shortage Detection

When work with cool function, if water is not enough, "Bi-Bi" alarm sounds, the corresponding light flickers and then the water pump will stop working after 30 seconds if no water added in.

## CONSTRUCTION DRAWING



## SPARE PARTS LIST

No.	Accessory Name	Quantity	Unit
1	Air cooler	1	set
2	Instruction manual	1	Pc
3	Power cord	1	Pc
4	Casters	4	Set
5	Remote controller	1	Pc

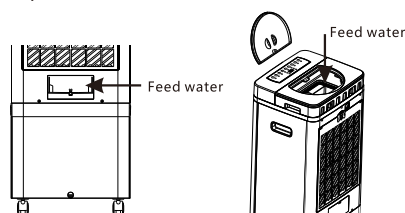
## TECHNICAL PARAMETERS

Model	LL-20A1/LL-20B1	LL-20A2/LL-20B2	LL-20A3/LL-20B3	LL-20A4/LL-20B4
Voltage	220V-240V~	220V-240V~	220V-240V~	220V-240V~
Power	220W	220W	220W	220W
Maximum speed	12.5m/s	12.5m/s	12.5m/s	12.5m/s
Water tank capacity	Water tank capacity 30L Humidify tank capacity 4L	Water tank capacity 30L Humidify tank capacity 4L	Water tank capacity 30L	Water tank capacity 30L Humidify tank capacity 4L
Detachable water tank	×	√	√	×
Humidify	√	√	×	√
Honeycom	1pcs	1pcs	1pcs	3pcs
Size	400*350*980(H)mm	400*350*1025(H)mm	400*350*965(H)mm	400*350*980(H)mm
Packing size	440*385*1005(H)mm	440*385*1050(H)mm	440*385*990(H)mm	440*385*1005(H)mm
N.W/G.W	13.5Kg/15Kg	14.8Kg/16.3Kg	13.3Kg/14.8Kg	14Kg/15.5Kg

**Remark: Due to constant development of our production in regards to specification and design, we take reservation for changes without prior notice.**

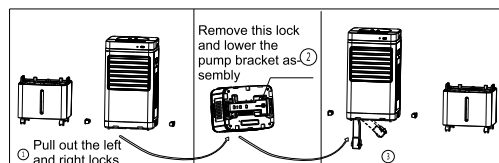
## OPERATION INSTRUCTION

1. Open the package and take out the product. Place the product on the horizontal floor.
2. Check if the spare parts are complete, same as the component list.
3. Place the unit on the floor. Take out the wheels to assemble. Note: Two casters with brakes are mounted on the front wheel and the other two are mounted on the rear wheel
4. water at the outlet according to the prompt sign. Feed the cooling water tank as shown in picture 1, and feed the humidifying water tank as shown in picture 2.
5. Only use the unit with correct power required. Get the plug pin into power and a small "beep" sound can be heard and the unit is in standby state
6. When using the machine in dry winter, you can choose "humidify" button to humidify air.
7. Separate water tank installation. See the model selection (refer to picture 3)



Picture 1

Picture 2



Picture 3

3

## CONTROL PANEL AND OPERATION



It's subject to actual optional function



The control function of the remote control is consistent with that of the buttons of corresponding models

1. **ON/OFF:** Press this button in standby mode to display the ambient temperature on the digital display. Press once this button to make the unit ready for working. For first time use, it will start up with MID in 3 seconds and then revert to work with LOW or under the memorized status. Press again this button to turn off. And remember the running state of the fan before it is turned off (the timing is not remembered), and the next time it is turned on, it will be run in the state of memory. (If the cooling function is turned on, press the "on/off" button, and the fan will continue to run for 15 minutes to dry the wet honeycomb and turn off, or press the "on/off" button again to close it)
2. **SPEED:** Press this button to select desired fan speed, LOW-MID-HIGH-LOW, in turn. The corresponding speed indicator light will be displayed. The motor will be delayed for 5 seconds at the first startup until the crosswise blade is fully opened.
3. **SLEEP MODE:** sleep mode button is a valid button when power is on, press this button, the corresponding indicator light is on and press this button again, then revert to work under the memorized speed.
4. **SWING:** When the fan is running, press the corresponding key to control the start and close of the vertical/horizontal blade swinging (first on, second off), the pendulum indicator light is on, the pendulum load is output, the upper, the lower, the left and the right automatically swing the wind.
5. **COOL:** At the same time, the wind speed will jump to the sleep mode, and the indicator light will flash between the sleep wind and the corresponding operating wind speed. After 30 seconds, the wind speed will jump to the original operating wind speed. You can control the start and close of the cooling function (the first time on, the second time off), and the cooling indicator light will be on. (Make sure there is water in the tank and there is an alarm. If there is no water, the indicator light flashes and emits a "Bi, Bi" sound.)
6. **HUMIDIFY:** Before turning on the fan, feed an appropriate amount of water to the tank at the top. Press this button to control the start and close of the humidification function (first on, second off). When the humidification function is turned on, the humidification indicator light will be on, the atomizer will be started, and fog will be spewing out from the spray nozzle. Note: Do not add corrosive, alcohol, and other liquids
7. **IONIZER:** Press this button to release negative ions into the air (first on, second off) and ionizer indicator lights.
8. **TEMPERATURE DETECTION:** The temperature automatically displays when the machine starts.
9. **TIMER:** 1 to 24 hours of regular shutdown, no button or remote operation of the machine for 24 hours automatic shutdown.

4

## IMPORTANT SAFEGUARDS

- 1、 Do NOT open and repair the unit by any unqualified person.
- 2、 Wet hands are not allowed to operate the machine, and cleaning and wiping of the connected-power machine is not allowed, to avoid damage caused by electric shock. If you do not use the unit for a long time, please unplug the power plug, drain the water tank, and put it in a dry and cool place.
- 3、 Do not insert any other objects into the grid of air vent (inlet or outlet) during operation. The machine is equipped with a high-speed rotating fan to prevent accidental injury or damage to the machine.
- 4、 Do not cover the appliance with paper, cardboard, plastic, metal foil, or any other flammable material. Otherwise, a fire may occur. Keep the appliance away from any hot sources.
- 5、 Do not use outdoors, indoors only. Avoid direct sunlight for a long time
- 6、 Water level must be between the MIN and MAX line.
- 7、 After filling with water, do not lean the unit and avoid moving it, which may cause water to overflow the sides of the tank and leak. If the unit needs to be moved a little, push on the side gently.
- 8、 Never put the unit side down especially with water inside, if it accidentally falls down, unplug the power immediately and don't restart until it's dry at least for 24 hours.
- 9、 Do not place any objects on the top of the unit. Don't cover the unit window while using.
- 10、 Keep the air vent (inlet or outlet) away from obstacles such as curtains, walls and so on.
- 11、 Since this product can clean the air, the water in the water tank is easy to deteriorate and produce peculiar smell, please pay attention to change the water; Use this machine to humidify in winter, if the indoor temperature is below zero, it is better to use warm water to humidify.
- 12、 Do not insert any other objects into the grid of air vent (inlet or outlet) during operation.
- 13、 Don't use the unit in the damp environment like bathroom, swimming pool.
- 14、 Keep the appliance and its cord out of reach of children less than 8 years
- 15、 If the supply cord is damaged, it must be replaced by its service agent or a similarly qualified person in order to avoid a hazard.
- 16、 This appliance is intended to be used in household and similar applications such as:
  - staff kitchen areas in shops, offices and other working environments;
  - farm houses;
  - by clients in hotels, motels and other residential type environments;
  - bed and breakfast type environments.
- 17、 Insert the power cord end into air cooler socket,make sure connect well.Must unplug the power cord pin from wall socket before moving the air cooler or adding water. Do not unplug the power cord end directly when the air cooler is working or moving the unit .

## TROUBLE SHOOTING

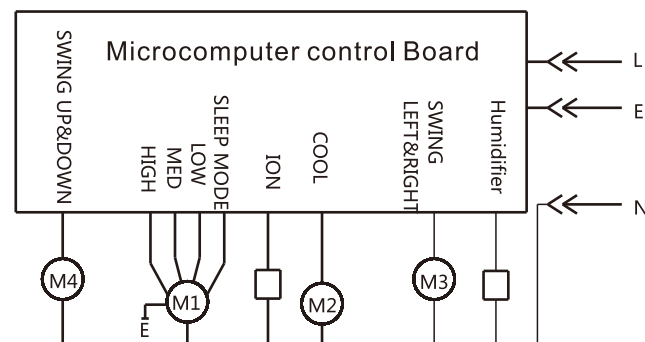
Please contact our service center or qualified technician for further inspection if have follow problems:

Problems	Possible reasons	Solutions
Not working	1. The plug is not securely inserted into the socket or not connected well. 2.The "ON/OFF" button is not pressed.	1. Insert the plug pin into the wall socket and make sure it is connected well 2. Press "ON/OFF" button after plugged.
Cool effect not good	1. Not enough water in water tank 2. Water pump is blocked 3. Air vent is blocked by dust	1. Add water to ensure enough water for pumping 2. Clean water tank and remove the impurities. 3. Clean the dust or foreign objects from the air vent
Error Code:E1	Problem in temperature sensor circuit	Please replace the probe

Notice:

- 1.The problem cannot be found in the list or it continues.
- 2.Foreign substances or water enter into air cooler, causing the air cooler cannot be run.

## CIRCUIT DIAGRAM



This marking indicates that this product should not be disposed with other household wastes throughout the EU. To prevent possible harm to the environment or human health from uncontrolled waste disposal, recycle it responsibly to promote the sustainable reuse of material resources. To return your used device, please use the return and collection systems or contact the retailer where the product was purchased. They can take this product for environmental safe recycling.